



Values, Purpose, Vision and Strategy.

FORTH^{ES}



Values



Tenacity

We have a 'can do' mentality



Curiosity

We find a way to get things done through investigating and being pro-active



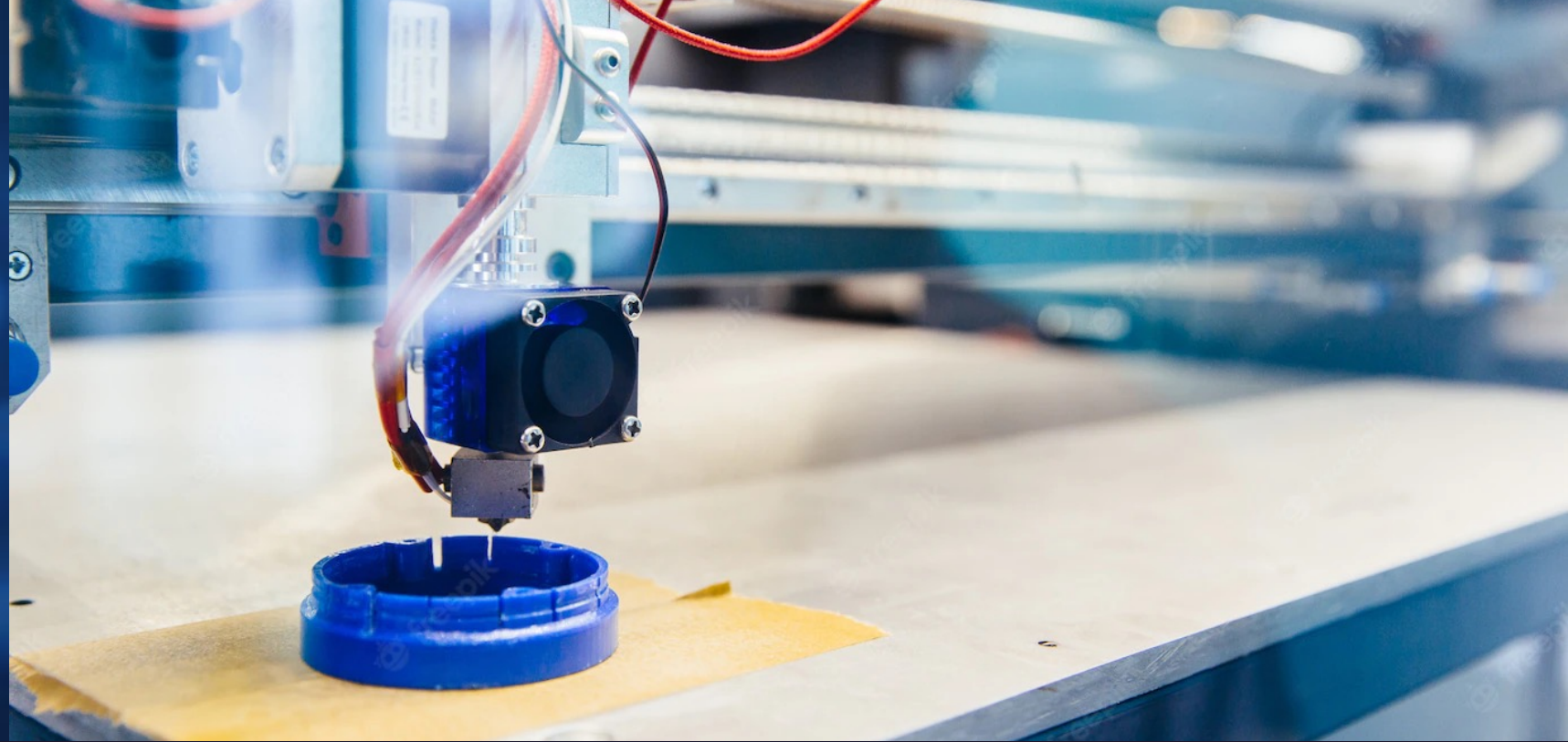
Responsiveness

We manage teams and priorities to meet our customer's needs night and day.



Family

As a family business, we nurture talent with a view to progressing everyone.

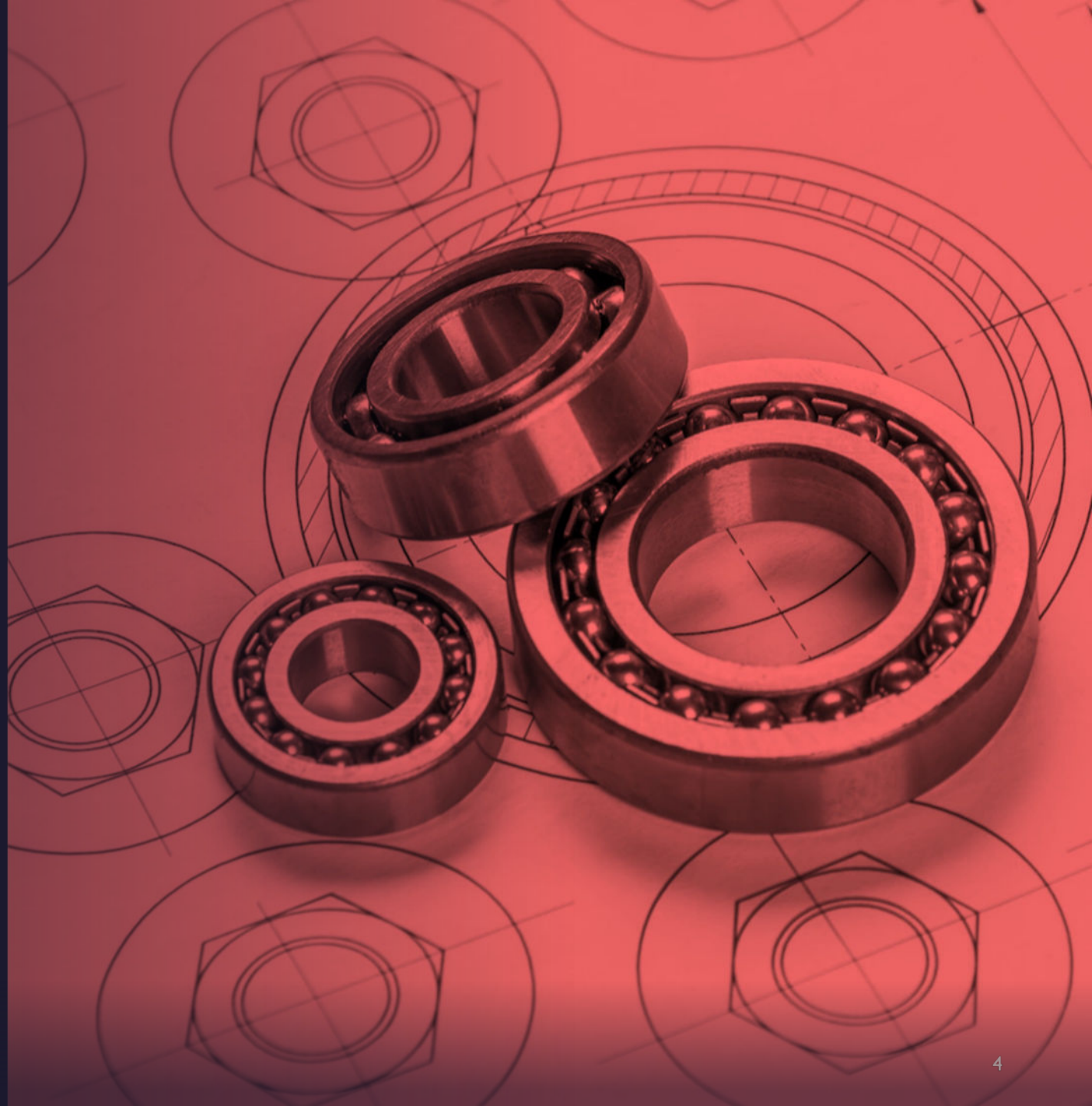


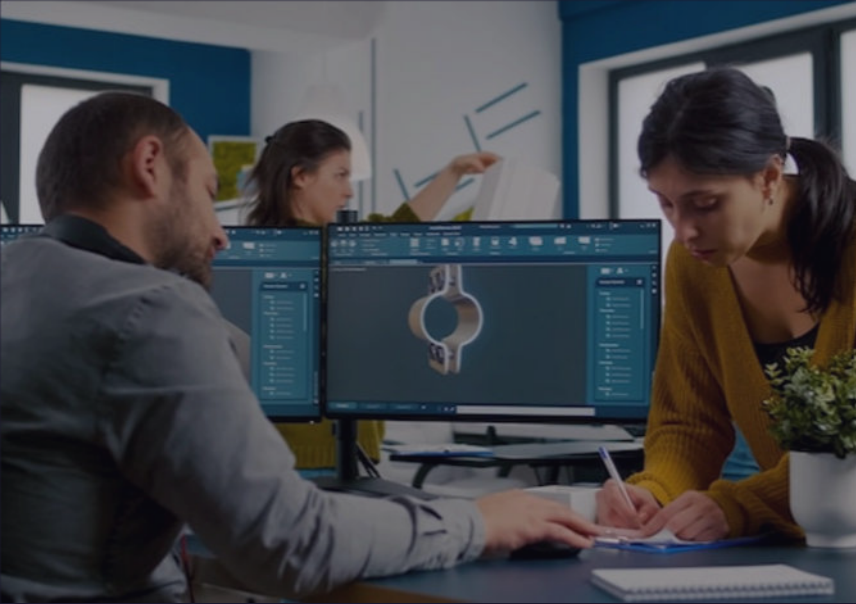
Purpose

- Forth is committed to creating valuable sustainable employment in Cumbria to improve the lives and livelihoods of its people and the supply chain.
- Forth is proud to support the community in which we live and work through engagement in schools, donating resources to good causes, and volunteering.

Vision

- Our vision is for the Forth brand to be known nationally and internationally for unique, cutting-edge technology and world firsts.
- Forth will be the supplier of choice, with a reputation for getting the job done using our pragmatic approach and innovative solutions.
- We strive to leave a legacy by creating and preserving jobs for local people and the Cumbrian supply chain, now and for future generations.
- We will become carbon neutral by 2050.





Our strategy starts with a commitment to our people, the promise to continued training and development to maintain their skills and capabilities and make the next generation better than us.



We will continue to work in collaboration with our customers and partners, learning from each other, sharing knowledge and striving to deliver first class solutions to meet their needs.



To raise awareness of the Forth brand and the quality we deliver.



We will take our comprehensive knowledge and expertise of hazardous environments and apply it to other industries.



Strategy

Why choose Forth?

- With design, manufacturing, and machining under one roof, we can control our 'cradle to grave' engineering solutions to complex problems in any environment.
- Mechanical designing and prototyping are our speciality with our flexible and pragmatic approach.
- We pride ourselves on our responsiveness to our customer's problem statements with a 'can do' attitude and our willingness to go the extra mile.
- Our multi-million Deep Recovery Facility provides a test facility unrivalled in the UK.
- Our team has a wealth of knowledge that can be transferred between industries which allows us to view a problem from multiple angles and leads us to the best solution for our customers.



FORTH[®]

Risehow Hydraulic Centre, Maryport, Cumbria CA15 8PA.

Flass Lane, Barrow-in-Furness, Cumbria LA13 0GW.

Unit 6, Leconfield Industrial Estate, Cleator Moor, Cumbria, CA25 5QB.

01900 816000. info@forth.uk.com. www.forth.uk.com

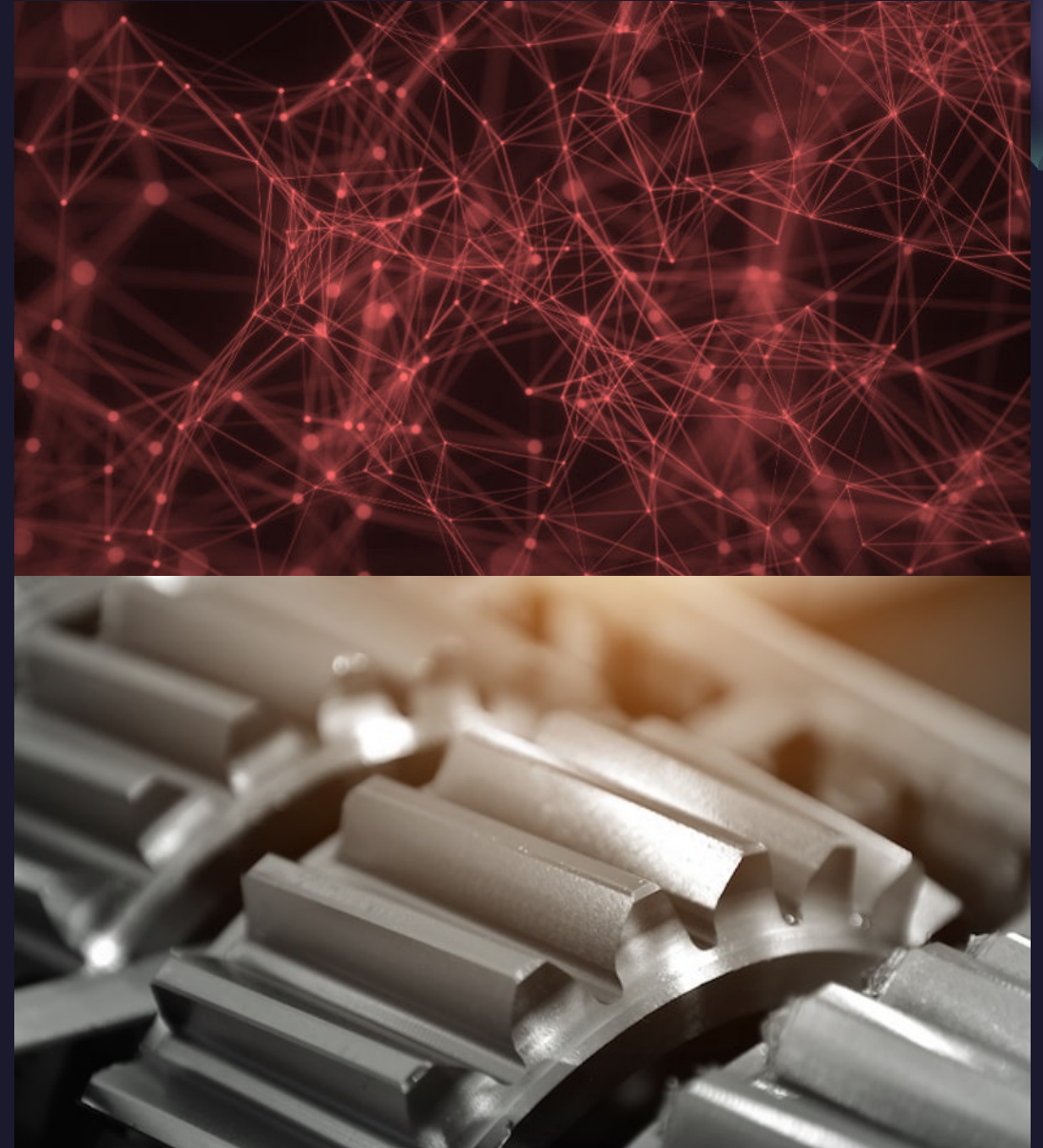


Image from www.freepik.com